

74 Dean Court Road

BH2020/03127



**Brighton & Hove
City Council**

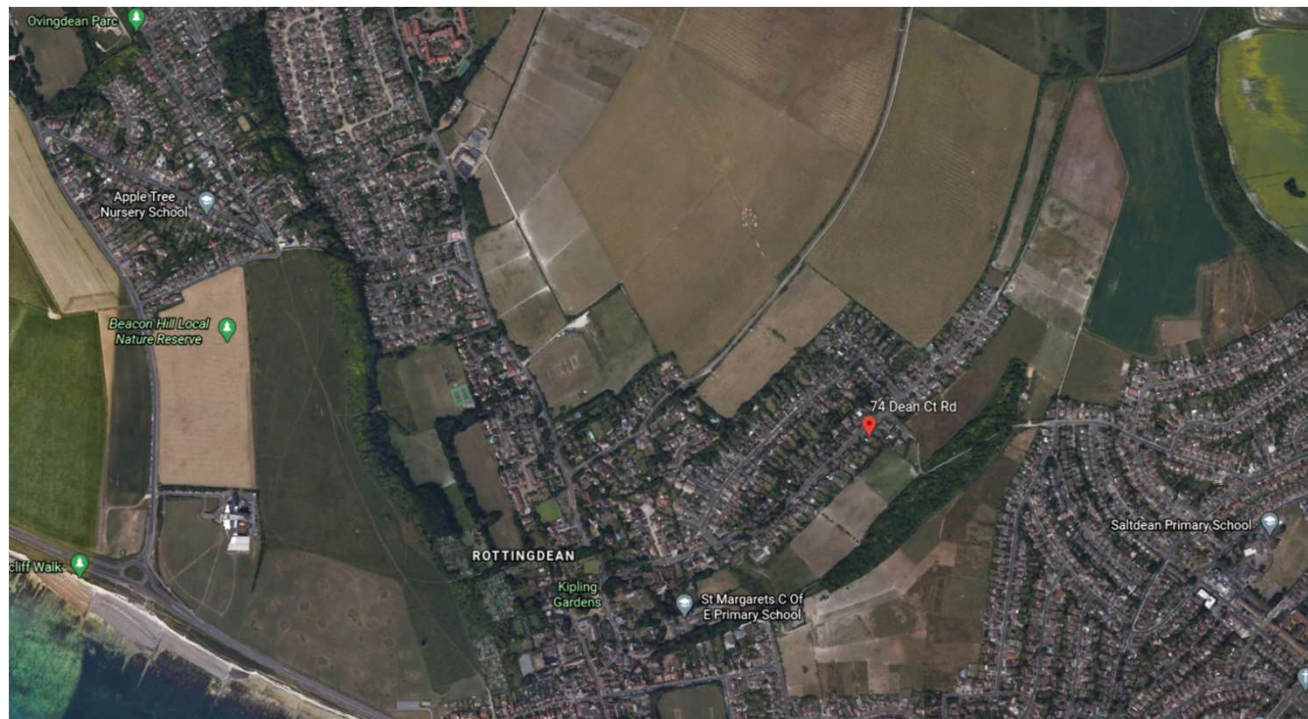
Application Description

- Erection of playhouse in rear garden (part retrospective).



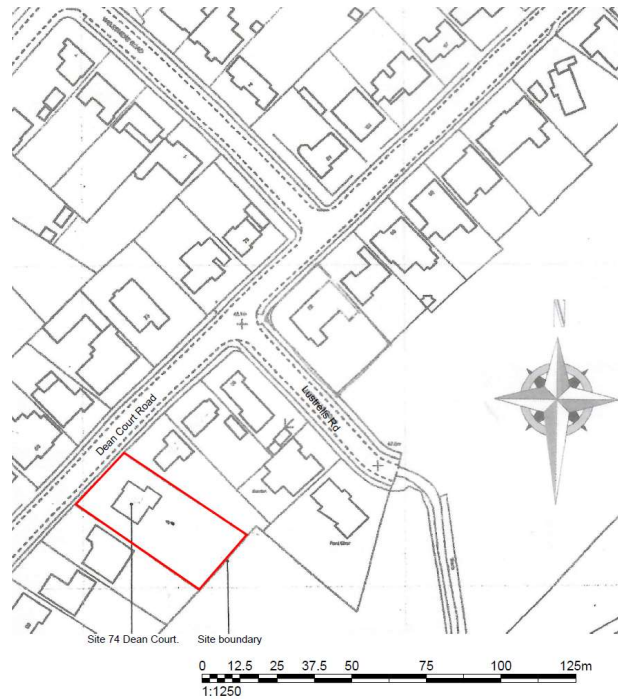
Brighton & Hove
City Council

Map of application site



Brighton & Hove
City Council

Existing Location Plan



4

LP-001-REV A



Aerial photo(s) of site



Brighton & Hove
City Council

3D Aerial photo of site



Brighton & Hove
City Council

Street photo(s) of site



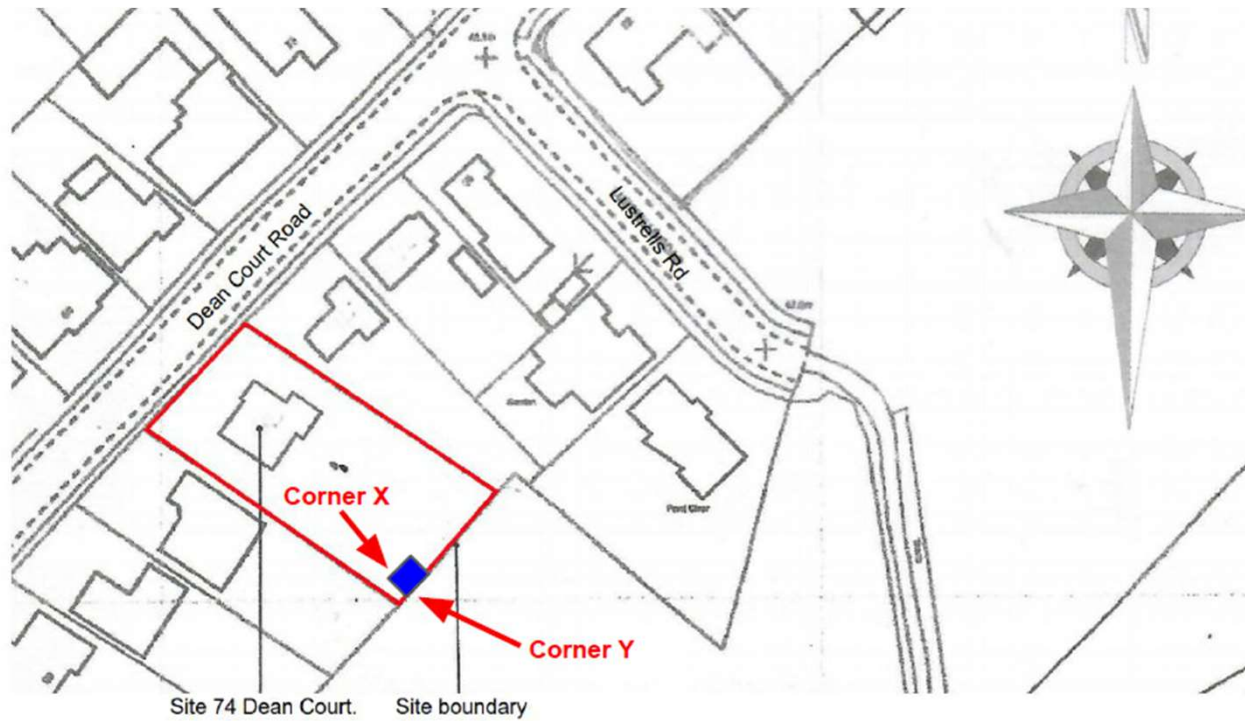
Brighton & Hove
City Council

Rear Aerial view



Brighton & Hove
City Council

Proposed Location Plan



6

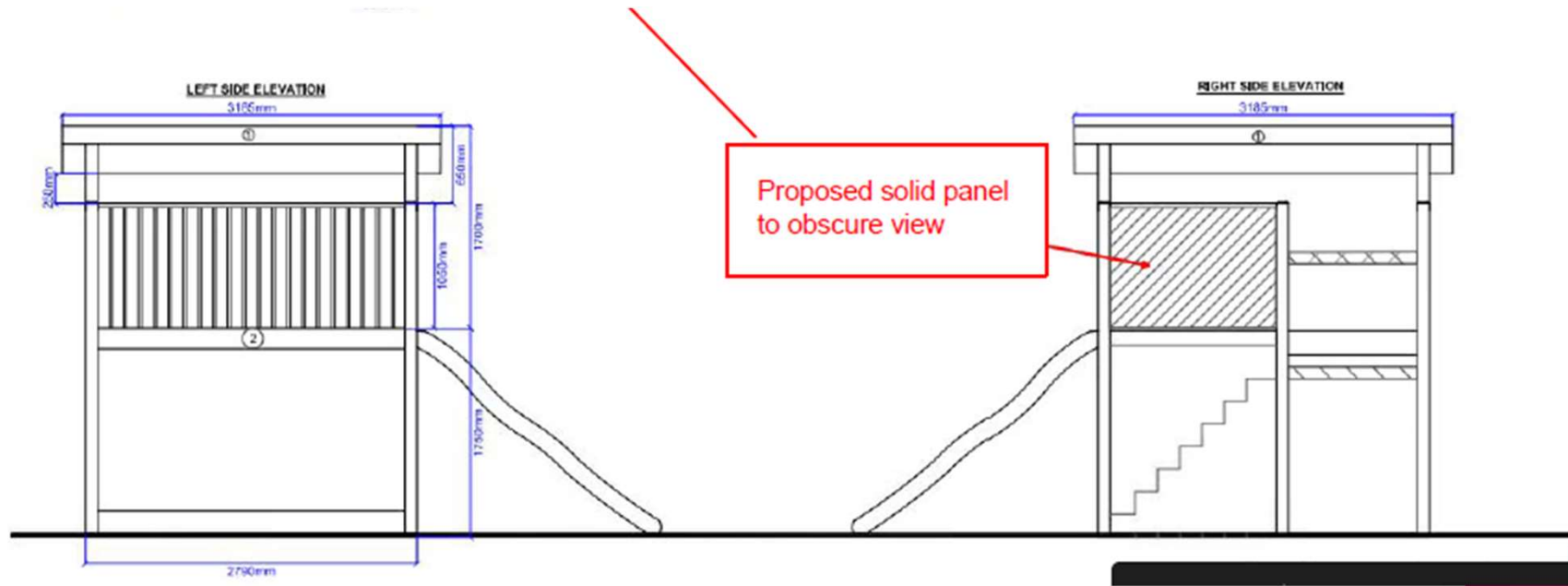
ID



View of platform from host garden



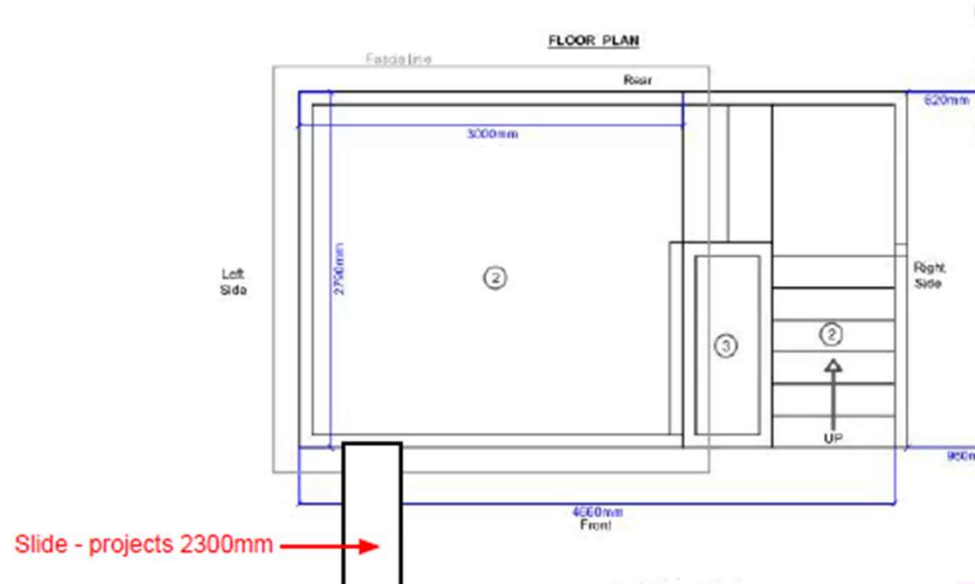
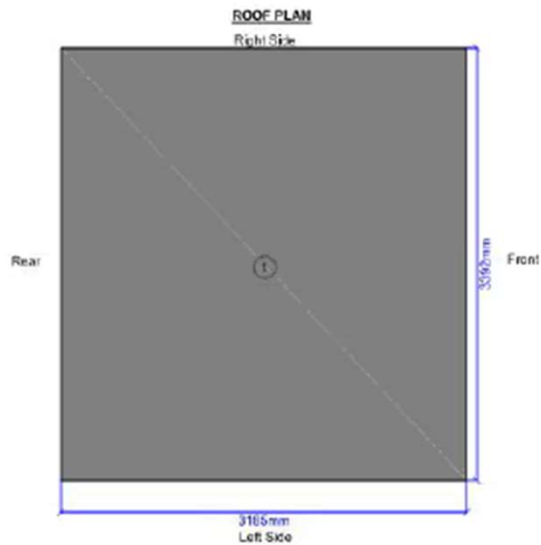
Proposed Elevations



11

PP-004-REV B

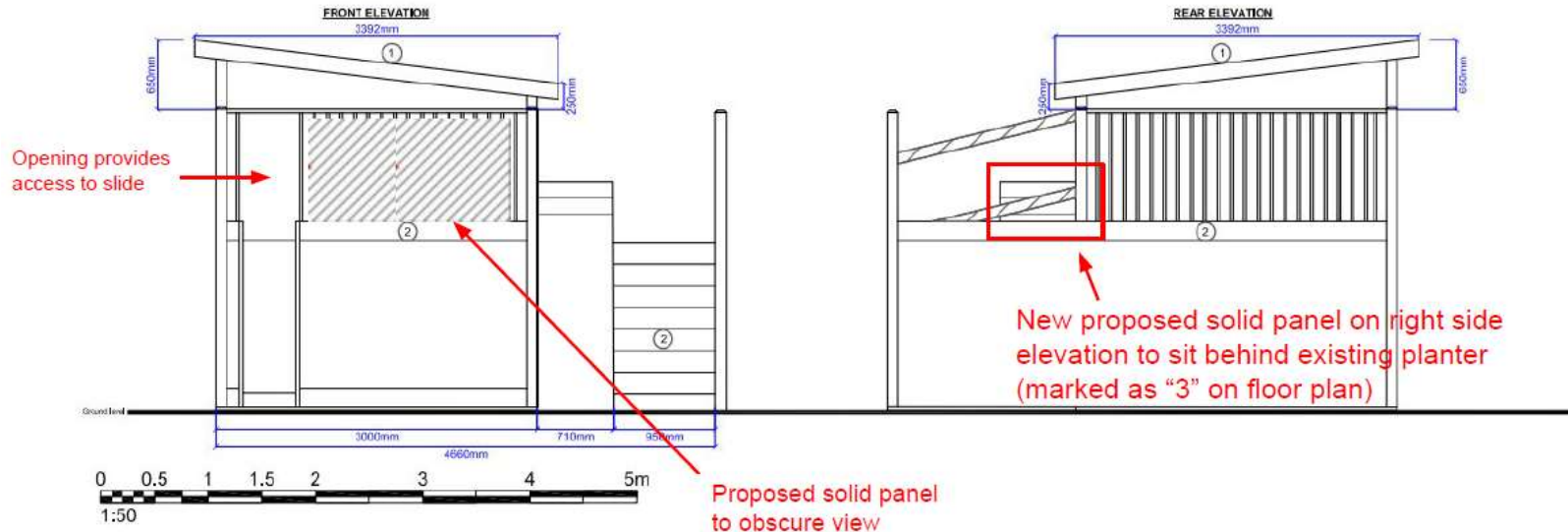
Proposed roof and floor plan



12

ID

Proposed Elevations

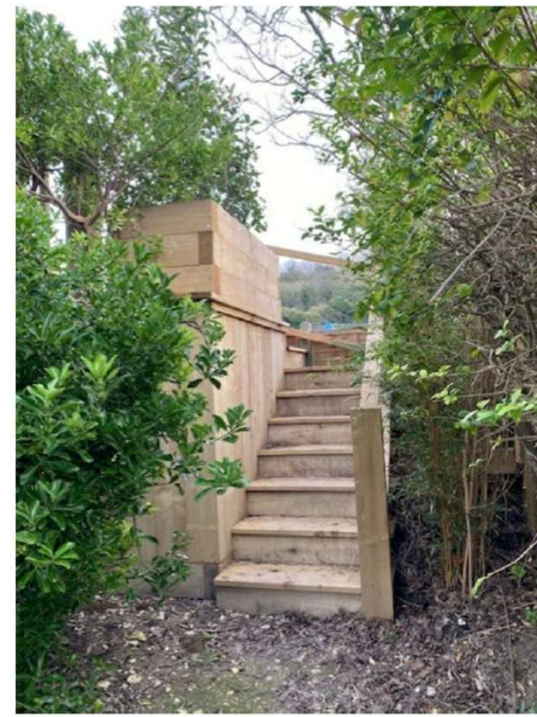


13

PP-004-REV B



Front Elevation (Looking East)



Brighton & Hove
City Council

Side Elevation (looking South)



Looking south from platform



View south and west from platform –over neighbours garden



Brighton & Hove
City Council

View west and north from platform –over host garden



Brighton & Hove
City Council

Key Considerations in the Application

- Impact on the amenity of surrounding residents
- Impact on character of the area and the South Down National Park
- Use of the structure



Brighton & Hove
City Council

Conclusion and Planning Balance

- Structure small scale and placed in a large garden.
- No significant harm to neighbouring amenity or South Downs National Park (SDNP).
- Design mitigates potential for unacceptable overlooking or noise.
- Designed with material and scale sympathetic to the SDNP.
- **Recommend: Approve**